



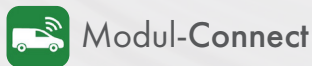
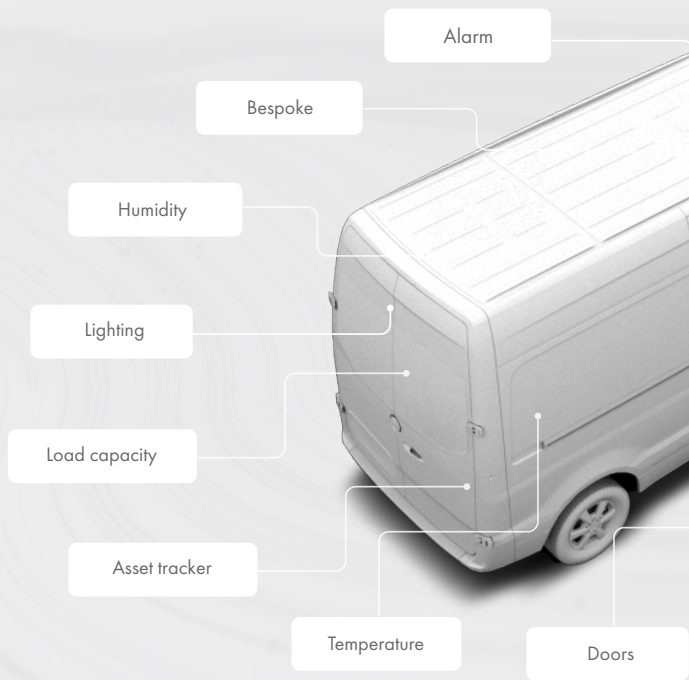


The idea

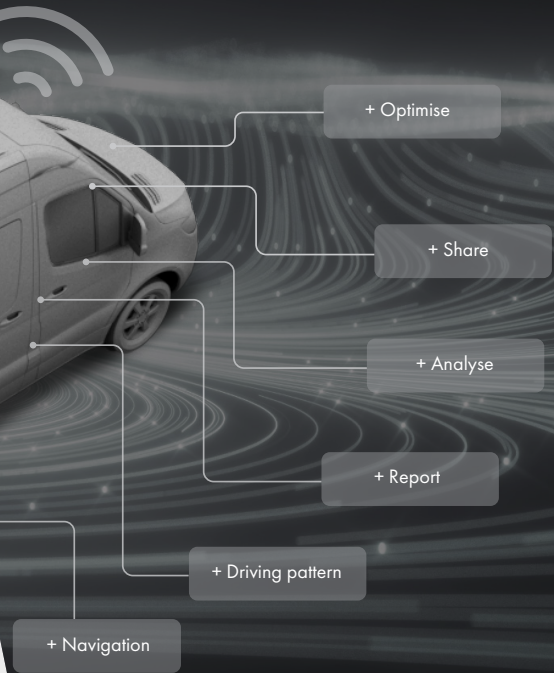
Modul-Connect PRO brings vehicle fleets to life. A powerful control box in every vehicle provides value-adding functionality, giving both the driver and support teams access to real-time data. The smartphone revolutionised the way people connect. Now Modul-Connect PRO is about to give the same freedom within vehicle fleet management.



Intelligent platform



Intelligent connection



Modul-Connect

Modul-Connect is a unique and robust platform for all digital and electrical devices in commercial vehicles. The system is quick and easy to install and being independent of the OEM's electrical system and any other vehicle electrics, it offers maximum reliability.

Modul-Connect consists of a versatile control box with high-capacity outputs, which all offer individual settings for battery guard and/or timer. Additionally, it has inputs which can be used for switching from signals and to control outputs. Three CAN channels enable direct integration with the vehicle or additional systems as may be required. Bluetooth communication allows for wireless switches with a range of up to 100 m. The electrical products can be managed using the Modul-Connect App from a phone or tablet (iOS or Android), a battery driven remote control, or powered switches with or without display.

The system is extremely intelligent and allows for advanced programming. For example, it can turn the work lights off when releasing the handbrake. Using a weighing system, the driver can be alerted when the vehicle is over-weight.

Modul-Connect PRO

The Modul-Connect PRO can do everything the Modul-Connect system can. In addition, it allows you to monitor and manage your vehicle fleet.

Equipped with a SIM card, the Modul-Connect PRO system sends all data to the cloud for visualisation in the Web Portal. Portal access can be granted on any level, for example by country, region, or department.

In the Web Portal, all vehicles are displayed in a list and on a map where you can follow their current position, route, battery level and, if a weighing system is installed, the current weight. If the system detects a sensor value outside the allowed range, a warning is displayed on the map.

All data is stored and using the calendar function you can easily review previous routes, driving patterns and warnings.

With the driving journal service, reports are generated with exact routes, driving pattern and road toll passages. The driver can categorise the trip as business or personal, which comes in handy when preparing the monthly tax report.



Modul-Connect PRO: On the road Stretch the limits



Control your load



PREVENT VEHICLE OVER-WEIGHT

Are you struggling with your vehicles being over-weight? The on-board vehicle weighing system monitors the vehicle weight in real-time. The weight is shown on a display switch panel, mobile phone or tablet and is presented in relation to the payload.

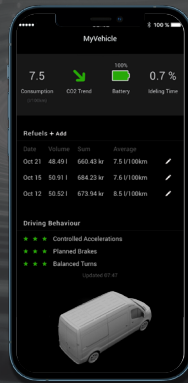
The system gets its data from sensors installed on the vehicle suspension and enables the driver to monitor the front axle, rear axle and total weight of the vehicle. The system is extremely precise with an accuracy of +/- 2.5 % when close to maximum payload.

The display switch panel, with a high-quality OLED screen, is designed to fit in the cab area of the vehicle. Backlit switches make it easy for the driver to see which accessories are turned on. A mobile phone or a tablet (iOS/Android) can be used in combination with, or instead of, the display switch. The Modul-

Connect App, with user-friendly graphics, warns the driver when the vehicle is close to maximum load.

With a Modul-Connect PRO system installed, it is possible to monitor the weight of each vehicle in the Modul-Connect Web Portal. The part of the route where a vehicle was over-weight will be shown in red on the map. A report with historic warning messages per day and route can be easily generated.

Modul-Connect PRO: In the office Plan with precision



Find your optimal driving pattern

PLAN WITH PRECISION

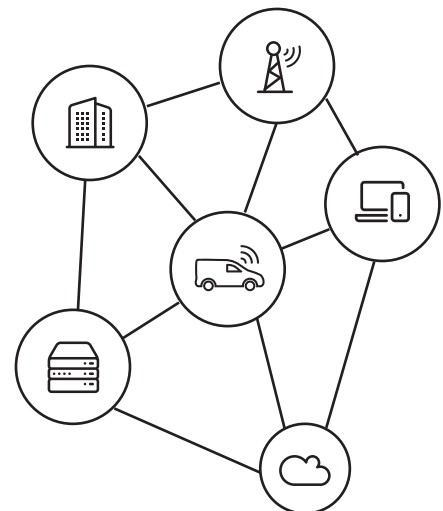
You can acquire valuable insights by monitoring your fleet. By optimising the routes, both kilometres and valuable time can be saved. In the Modul-Connect Web Portal, all your vehicles are visualised with their exact position and driven route, battery level and load weight from the weighing system. For vehicles with sensors installed, you will be able to follow the statistics, and if the weighing system alarms, you will be notified. All data is stored, and you can easily analyse historic values. In addition, you can create different kinds of reports, which can be exported to other formats and shared for further analyses to optimise the business. Based on local regulations and guidelines, it is also possible to set which data will be visible for each user.

Using our Driving Journal service, precise reports can be generated from the system. You will be

able to see all routes, kilometres driven and road toll passages. The driver can categorise the trip as business or personal using the mobile phone. The compiled data can be exported to Excel and used as a basis when creating the monthly tax report to the finance department.

Using the Driving Behaviour service, it is possible to detect acceleration, heavy braking and unbalanced turns. In addition to the traffic safety aspect, this information can be used to minimise fuel consumption and emissions and prolong the lifespan of the vehicle's tires, brakes etc.

Modul-Connect PRO:
Share data wherever you are





Modul-Connect PRO: On the road Monitor the chain



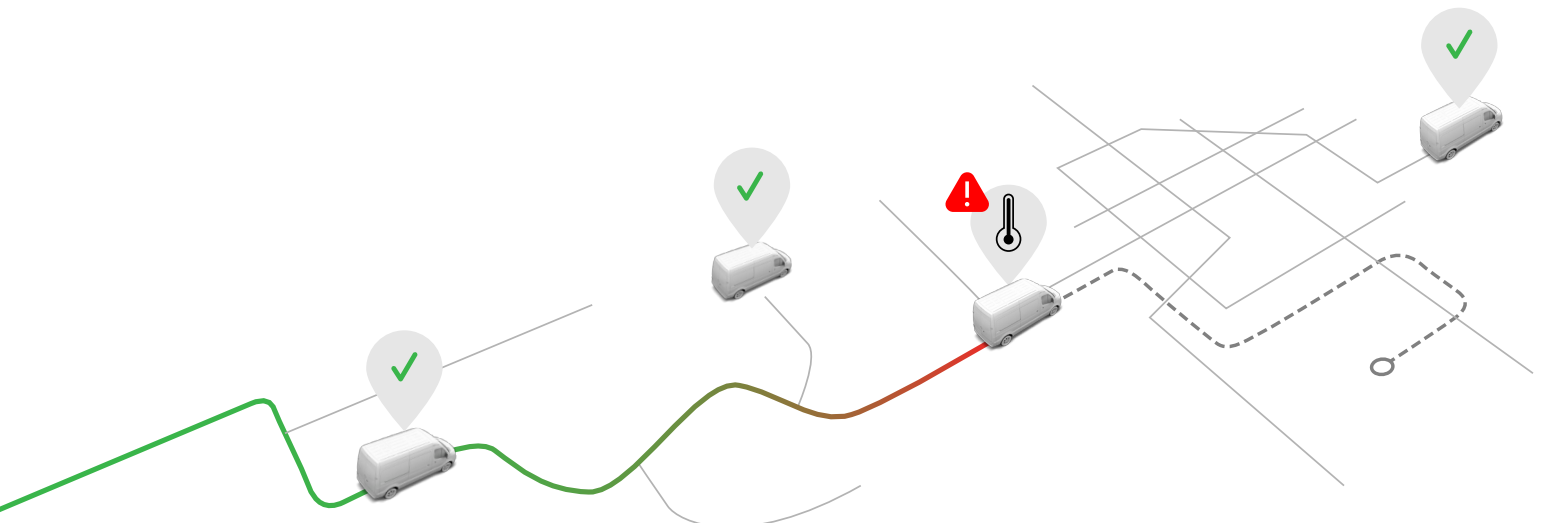
Prevent failure

SENSORS

Are you carrying temperature sensitive equipment? With a wireless humidity and temperature sensor you can monitor the climate in the vehicle and get notified if it gets too warm or too cold. With a Modul-Connect PRO system you can also be alerted when away from the vehicle, and as a fleet manager you can see warnings from all vehicles in the Web Portal.



We are also offering PIR sensors, which can turn on the lighting or other equipment when movement is detected.

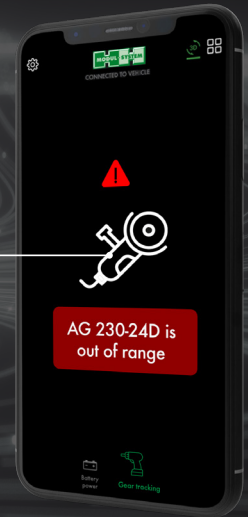




Modul-Connect PRO: On the road

Secure your gear

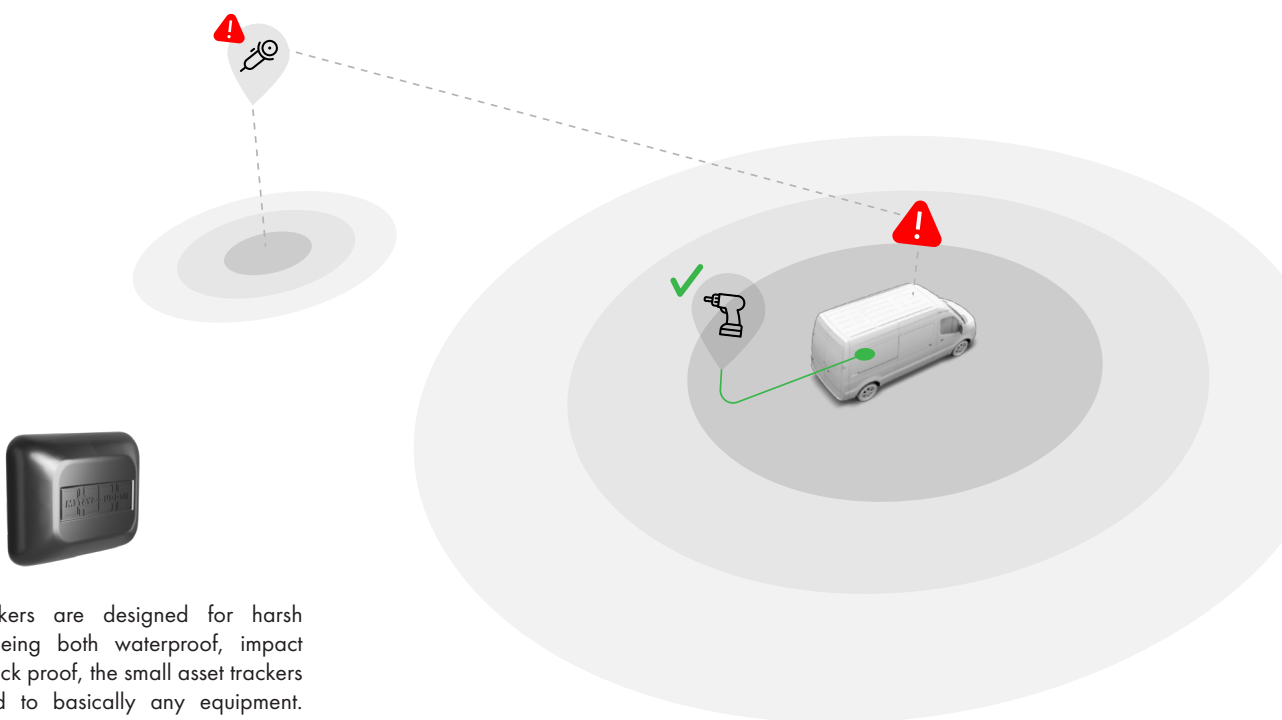
Track your tools



ASSET TRACKERS

Tired of tools and equipment being forgotten at different worksites? By bonding asset trackers to valuable or business sensitive equipment, you can make sure not to leave anything behind. Several trackers can be connected to a vehicle, and when out of range, a notification will show on the Modul-

Connect App. If connected to a Modul-Connect PRO system, warnings will also be displayed in the Web Portal. The activation range can be adjusted to suit your requirements.



The asset trackers are designed for harsh environments. Being both waterproof, impact resistant and shock proof, the small asset trackers can be bonded to basically any equipment. The built-in battery is designed to last for approximately 5 years.

MODUL-CONNECT PRODUCTS



Modul-Connect main box

24000-03	260	47	166	1.2



Modul-Connect PRO main box

24000-032	260	47	166	1.2



Modul-Connect Interior antenna

24380-03	161	77	16	0.2

Modul-Connect Exterior antenna

24390-03	80	74	26	0.4
----------	----	----	----	-----



Modul-Connect remote control

24030-03	57	23	73	0.1

Suitable with remote control holder 24230-03



Modul-Connect Backlit switch panel

24035-03	57	26	73	0.1



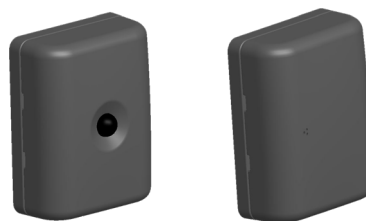
Modul-Connect display switch panel

24040-03	185	23	58	0.2



Modul-Connect on-board vehicle weighing system

24050-03	-	-	-	2.9



PIR sensor

24300-03	56	25	72	0.1

Available May 2021



Asset tracker

24350-03	45	11	35	0.1

Available July 2021

Temperature sensor

24310-03	56	25	72	0.1
----------	----	----	----	-----

Available June 2021



Battery Charger DC-DC 30A

Shopping Cart	Dimensions (LxWxH)	Weight (kg)
21500-04	205 x 56 x 144	3.2



Power inverter

Power (W)	Model	Dimensions (LxWxH)	Weight (kg)
400W	21040-03	218 x 152 x 66	1.1
600W	21060-03	237 x 175 x 89	2.0
1000W	21100-03	320 x 175 x 87	2.7
2000W	21200-03	414 x 230 x 110	5.2
3000W	21300-03	539 x 230 x 115	7.0



RJ11 interface cable

Model	Dimensions (LxWxH)	Weight (kg)
24100-03	150 x 10 x 10	0.1
24110-03	300 x 10 x 10	0.1



12Vdc power socket

Model	Dimensions (LxWxH)	Weight (kg)
22033-03	55 x 89 x 50	0.1



12Vdc power socket / USB socket

Model	Dimensions (LxWxH)	Weight (kg)
22034-03	100 x 85 x 50	0.1
22035-03	100 x 85 x 50	0.1
22036-03	100 x 85 x 50	0.1

¹ 12Vdc power socket + USB 5V 1A/2.1A
² 12Vdc Double power socket
³ 12Vdc Double USB power socket



Kit - Airtronic D2

Model	Dimensions (LxWxH)	Weight (kg)
26002-032 ¹	- x - x -	8.3

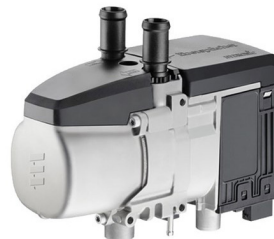
Kit - Airtronic D4

26004-032 ²	- x - x -	14.6
------------------------	-----------	------



EasyStart Pro Timer TP7.1
(Airtronic/Hydronic)

Model	Dimensions (LxWxH)	Weight (kg)
26040-03	82 x 37 x 12	-



Hydronic S3 Economy D4E 12V CS

Model	Dimensions (LxWxH)	Weight (kg)
26030-03	215 x 91 x 120	2.0



MSN Airtronic Vehicle Installation
D2/D4/D4+

Model	Dimensions (LxWxH)	Weight (kg)
26051-03	350 x 155 x 90	2.3

U-kit

26031-03	370 x 380 x 150	1.0
----------	-----------------	-----



Beacon, amber glass
12/24V

19780-03	149	149	112	0.51



Beacon, white glass
12/24V

19781-03	149	149	112	0.51



Beacon with magnetic base,
amber glass 12/24V

19782-03	188	188	112	1.2



Beacon low, amber glass 12/24V

19788-03	149	149	70	0.3



Lightbar

19790-03	343	238	88	3.0
19796-03	608	238	88	4.5
19791-03	1137	238	88	8.5
19792-03	1269	238	88	9.5
19793-03	1401	238	88	11.0



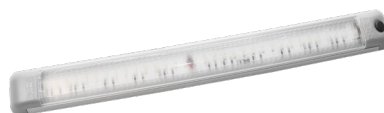
Drawer / shelf light

19710-03	320	17	17	0.1
19711-03	482	17	17	0.1
19712-03	644	17	17	0.2
19713-03	968	17	17	0.2



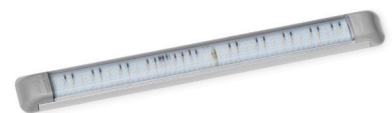
Ambient light with PIR sensor

19701-034	334	38	17.5	0.1



Ambient/Workbench light with switch

19701-032	334	38	13	0.1
19702-032	658	38	13	0.3



Ambient/Workbench light

19701-03	334	38	13	0.1
19702-03	658	38	13	0.3
19703-03	982	38	13	0.4



Strobe light, hide away
12/24V

19770-03	35	32	30	0,04



Strobe light, extra flat
12/24V

19771-03	90	8	28	0,06



Strobe light, flat
12/24V

19772-03	118	11	29	0,06



Strobe light, 180 degrees
12/24V

19774-03	150	30	35	0,13



Strobe light for grill
12/24V

19775-03	136	25	15	0,08



Strobe light, corner
12/24V

19776-03	170	95	33	0,49



Strobe light, wing mirrors
(left + right)

19777-03	38	38	26	0,4



Work light
18W 12/24V

19760-03	160	60	70	0,45



Work light with magnetic base
18W 12/24V

19761-03	160	60	65	0,6



Work light
48W 12/24V

19763-03	110	60	139	0,75



Work light with magnetic base
48W 12/24V

19764-03	110	60	160	1,1



Roof bar light, 1 pair

19778-03	45	14	37	0,3

Available May 2021

BENEFITS WITH THE MODUL-CONNECT DIGITAL WIRELESS CONTROL SYSTEM



Integrated
battery guard



Low weight



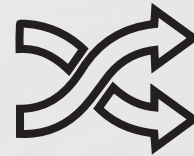
Reduced
downtime



Guaranteed for
3 years



Second life



Flexible



Stretch the
limits



Monitor the
chain



Stay up to date



Plan with
precision



Get statistics
and reports



Share data
wherever you are

MODUL-SYSTEM

www.modul-system.com

